

NOVA SOUTHEASTERN  
UNIVERSITY

COLLEGE OF PSYCHOLOGY

NEW GRADUATE STUDENT  
ORIENTATION

FALL 2019

College of Psychology  
NOVA SOUTHEASTERN UNIVERSITY

**NSU**  
Florida

# Welcome New Students

## Dean Karen Grosby, Ed.D.

College of Psychology  
NOVA SOUTHEASTERN UNIVERSITY

**NSU**  
Florida



# NSU PUBLIC SAFETY DEPARTMENT

Pat McGowan – Associate Director of  
Public Safety

27 Years Police Career

NOVA SOUTHEASTERN  
UNIVERSITY

**NSU**  
Florida

- Our Public Safety Department has 129 employees
- 82 are in Uniformed Patrol
- We have Officers assigned to the Medical Health Professions buildings, as well as the Maltz, Horvitz, Library, Family Center Village, Law School, University Center and Oceanographic buildings.
- Officers are assigned to the Residential Halls overnight.

- ▶ We do proactive patrolling 24 hours a day and have a 24 hour a day dispatch and Security Operations Center. Their number is 954-262-8999.
- ▶ Dispatchers and Communications Officers monitor phones and over 1800 cameras that are present on our campuses. Over 1200 are on the main campus alone.

- ▶ Our officers are trained in numerous areas of protective services including:
- ▶ Homeland Security
- ▶ Active Shooter Incidents
- ▶ Bomb Threats
- ▶ Campus Security Authority and Sexual Assault Training
- ▶ CPR and Automated Electronic Defibrillator
- ▶ Title IX and the Violence Against Women Act
- ▶ Interpersonal Skills and Workplace Communications

- ▶ We have 100 Blue Light Phones around the campus.
- ▶ We have 5 Davie Police Officers assigned full time to the campus.
- ▶ Two more Davie Police Officers are assigned to the residences at night.



# THE EMERGENCY NOTIFICATION SYSTEM NSU ALERT

- ▶ If there is an emergency of ANY kind, you will receive a call, a text message, and an email with instructions on what to do.
- ▶ We may need you to stay in place, evacuate a building, or follow other instructions.

# EMERGENCY SITUATIONS

Emergency Preparedness Training for all NSU employees

Hurricane Plan in place for any possible approaching storm.

Full services and shelters if within determined path.

Food, water, and Hurricane Plan will be instituted when necessary.

# CRIME PREVENTION

## BE INFORMED

- ▶ Know what is happening on the campus and in the area.
- ▶ Check the Public Safety Website and Campus Safety Manual for information.

## SAFETY AWARENESS

- ▶ Lock all doors on residence rooms and in vehicles
- ▶ Do not prop open any doors to allow unauthorized access. All who enter residence halls must be signed in at front desk.
- ▶ Call Public Safety if you see anything suspicious or unusual in your area.
- ▶ Report all crimes and situations that may be helpful to others.


# WEAPONS ON CAMPUS


## BE INFORMED


- ▶ Know what is happening on the campus and in the area.
- ▶ Check the Public Safety Website and Campus Safety Manual for information.

## SAFETY AWARENESS

- ▶ Lock all doors on residence rooms and in vehicles
- ▶ Do not prop open any doors to allow unauthorized access. All who enter residence halls must be signed in at front desk.
- ▶ Call Public Safety if you see anything suspicious or unusual in your area.
- ▶ Report all crimes and situations that may be helpful to others.


- ▶ We can help you if you need any of the following services:
  - ▶ Battery jump starts – we are equipped to jump start vehicles.
  - ▶ Key lockouts – we have trained personnel who can open a locked vehicle with valid proof of approved possession.
  - ▶ Tire filling
  - ▶ Escort Services
- 

- ▶ We have a Lost and Found inventory at the Campus Services building on SW 36<sup>th</sup> Street.
  - ▶ Call the Service Desk at 954-262-8985 to see if your property has been turned in.
  - ▶ Please turn in all found or lost property as soon as possible. The one who lost the property may be looking for it the same day.
- 
- A decorative graphic consisting of several parallel white lines of varying lengths, slanted diagonally from the bottom right towards the top right, set against the blue background.

- ▶ Parking rules are enforced and tickets are written
  - ▶ Park only in designated spaces in lots as assigned or permitted.
  - ▶ The first floor of the parking garage in some areas have meters and they are pay lots at all times.
  - ▶ The second floor and above are free for vehicles with a NSU parking decal on the rear window.
- 

We are here to protect the students and staff of Nova Southeastern University in any way we can.

Please call us at (954) 262-8999 if you need help with anything, or if you see something that may help us keep everyone safer and more secure while here.

A decorative graphic consisting of several parallel white lines of varying lengths, slanted diagonally from the bottom right towards the top right, located in the lower right quadrant of the slide.



OFFICE OF  
CAREER  
DEVELOPMENT

Meagan Jones

NOVA SOUTHEASTERN  
UNIVERSITY

**NSU**  
Florida



**OFFICE OF CAREER DEVELOPMENT**

# CAREER DEVELOPMENT

Career Development serves to support Nova Southeastern University's undergraduate students, graduate students, and alumni in their career success.

Decorative white lines consisting of several parallel diagonal strokes in the bottom right corner of the slide.

# MISSION & VISION

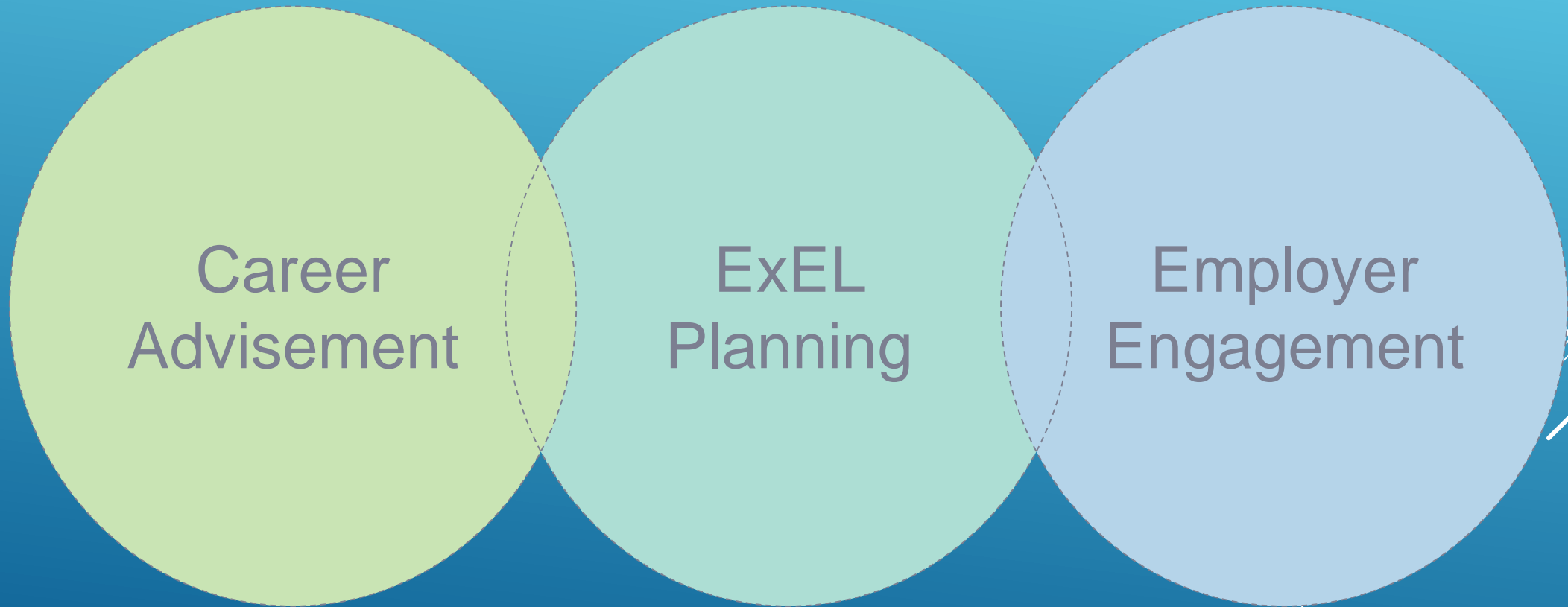
## Mission

- ▶ Career Development provides a supportive environment for NSU students and alumni to engage in individualized career exploration and planning that complements their academic experience and supports their professional goals.

## Vision

- ▶ NSU students and alumni are engaged in a culture of life-long career planning to achieve their professional goals.

# 3 MAIN COMPONENTS OF CAREER DEVELOPMENT:



# CAREER DEVELOPMENT SERVICES

- ▶ Resume, CV & Cover Letter
- ▶ Career Exploration
- ▶ ExEL Planning
- ▶ Job & Internship Search Assistance
- ▶ Networking
- ▶ LinkedIn & Personal Branding
- ▶ Mock Interviews
- ▶ Residency Applications
- ▶ Grad School Applications
- ▶ Personal Statement
- ▶ Salary Negotiations

# handshake



Stanford



Michigan State



Carnegie Mellon



Colorado State



Princeton



Rochester



Virginia



Cornell



Miami



Villanova



South Carolina



Brandeis

8,000,000+

Students & Young Alumni

200,000+

Employers

500 of 500

Fortune 500 Companies



facebook



Chevron



# EVENTS & WORKSHOPS

## ▶ Professional Development

- ▶ *Resume, Cover Letter, Networking LinkedIn, Building Your Brand and many more...*

## ▶ Employer Events

- ▶ *Bi Annual Recruit a Shark Day, Recruit a Shark Day Resume Review, Mock Interview Nights, & Employer Panels*

## ▶ Experiential Learning

- ▶ *Case Competitions, Employer Visits, Pre Health Day & Lunch Bytes*



# PARTNER WITH US!

## Referrals

- ▶ Know our services and provide insight to students
- ▶ Send students our way for an appointment or a drop-in!

## Department Collaborations

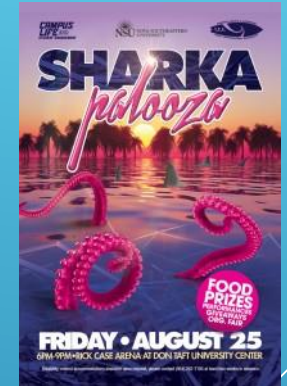
- ▶ Identify avenues for collaboration that will mutually benefit both our departments and our students

## Show Support!

- ▶ Attend one of our workshops or events to support us and your students!

# 1 NSU: DEPARTMENT COLLABORATIONS

**CHA[RA]CTER**  
define yourself



**SAVE THE DATE**  
**2017**  
**HOUSE CALLS**

Tuesday  
September 12, 2017  
7:00 p.m. - 8:00 p.m.  
All Residence Halls  
Meeting Request  
to Follow  
NSU  
NOVA SOUTHEASTERN  
UNIVERSITY  
Division of Student Affairs  
Office of Residence Life  
& Housing



Residential Life &  
Housing

Campus Life & Student  
Engagement

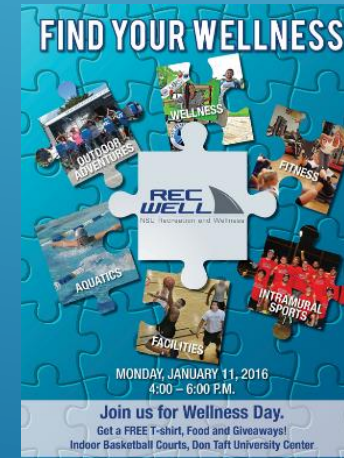
Student Media

Recreation & Wellness

Academic Affairs

Student Leadership &  
Civic Engagement

**TheCurrent**  
The Student-Run Newspaper of Nova Southeastern University



# 1 NSU: DEPARTMENT COLLABORATIONS



- Undergraduate Academic Advising
- Tutoring & Testing Center
- Health Professions Division
- International Affairs
- Orientation & Shark Preview
- Alumni Relations
- Athletics

**Are you interested in a healthcare profession?**

**Come to NSU's 4th Annual Pre-Health Day**  
 Saturday, April 14, 2018  
 Hulzonga Sales Institute  
 Carl DeSantis Building, Third Floor

- Hear from current health care and research professions about their career journey.
- Interview spots are offered on a first come first served basis.
- Explore a variety of healthcare careers by hearing from professionals themselves.
- Attend a resource fair to learn about Graduate Healthcare Programs, Research and Involvement Opportunities.
- Registration requires participation in all events and includes breakfast and snacks.

Space is limited, sign up today.  
 To RSVP, please visit [nova.joinhandshake.com/events/106867](https://nova.joinhandshake.com/events/106867)  
 For more information, visit [www.nova.edu/career](http://www.nova.edu/career), email [careers@nova.edu](mailto:careers@nova.edu), or call (954) 262-7201.

**Will You Be My Resume?**  
 Speed Resume Review and Networking

Tuesday, February 13, 2018  
 5:30 p.m. – 7:30 p.m.  
 Don Jeff University Center  
 Club Room, Second Floor

Network with industry professionals in your field and make meaningful connections.

Gain valuable feedback on your resume from employers in a multitude of industries.

Understand how to market yourself more effectively on your resume and how to get the attention of the hiring manager.

Register at <https://app.joinhandshake.com/events/115072>

**International Education Week**

**CAREER CHATS**

Career Advice and Pizza Slice:  
 International Jobs and Student Panel  
 Tuesday, November 14, 2017  
 5:00 P.M. – 6:30 P.M.  
 Coella Gallery, Alvin Sherman Library 2nd Floor

H-1B: A Workshop for International Students  
 M. Anne Saunders, Attorney-at-Law  
 Wednesday, November 15, 2017  
 2:00 P.M. – 4:30 P.M.  
 Harwitz Administration Building 1148  
 Contact the Office of International Affairs for more information: (954) 262-7278

Optional Practical Training (OPT)  
 A Workshop for International Students  
 Tuesday, November 14, 2017  
 Noon – 1:00 P.M.  
 Harwitz Administration Building 1148  
 Contact the Office of International Affairs for more information: (954) 262-7278

Career Strategies for International Students  
 Thursday, November 16, 2017  
 Noon – 1:00 P.M.  
 Harwitz Administration Building 1148  
 For more information and to register, please visit [nova.joinhandshake.com](http://nova.joinhandshake.com)

College of Health Care Sciences (CHCS)'s Office of Student Affairs Presents...

**GPS** GRADUATE PROFESSIONAL SUCCESS SERIES

THURSDAY OF EACH MONTH  
 NOON-1:00 P.M.

FREE LUNCH is provided by College of Health Care Sciences SGAs, Shark Dining, and the Office of Student Affairs at the Student Educational Centers.

January 31, 2018 "New Year, New Stress, New You!" Location: _____	February 28, 2018 "Professional Skills to Pay Your Bills" Location: _____
March 14, 2018 "Bridging the Generational Gap at Work and in the Classroom" Location: _____	April 4, 2018 "Find a Job... Find Your Fit" Location: _____

For more information, please contact the CHCS's Office of Student Affairs at (954) 262-1087, or email [studentsaffairs@nova.edu](mailto:studentsaffairs@nova.edu)

**International Education Week**



# LOCATION & TYPES OF APPOINTMENTS

## Horvitz Administration Building – Room 152

### Drop-In Advisement

Monday – Friday

9:00 AM to 4:30 PM

15-minute sessions with a career  
advisor

### Scheduled Appointments

Monday – Friday

9:00 AM to 5:00 PM

*(After-hours appointments  
available upon request, per  
advisor availability)*

45-60 minute sessions

In-Person, Phone, Skype



**Portfolium**  
**SHOWCASE YOUR**  
Class Projects • Research • Internships  
Leadership • Community Engagement • Study Abroad

[nova.portfolium.com](http://nova.portfolium.com)

- Upload your class work, projects, labs, papers, presentations
- Enhance your online presence, resume and LinkedIn
- Showcase to top employers and graduate schools your talents, passion, and skills

NSU NOVA SOUTHEASTERN UNIVERSITY  
Career Development

## Carl DeSantis Building – Room 1042

### Employer Relations Team Suite

- Job & Internship Approvals
- Handshake Management
- Employer Relationship Building
- Monthly Career Opportunity News Letter (Mako Career Opportunities)
- On Campus Interviews
- Student-Employer referrals
- Internship Coaching
- Recruit a Shark Day



# QUESTIONS?

Phone: (954) 262 – 7201

Email:

[career@nova.edu](mailto:career@nova.edu)



@nsucareerdevelopment



@nsucareerdevelopment



@NSU\_career

ALVIN  
SHERMAN  
LIBRARY

Charlene Cain  
Melissa Johnson

# Alvin Sherman Library, Research and Information Technology Center



*August 2019*





ALVIN SHERMAN LIBRARY, RESEARCH, AND  
INFORMATION TECHNOLOGY CENTER





**Charlene C.  
Cain**

Reference &  
Instruction  
Librarian

(954)262-4650  
ccain1@nova.edu



**Melissa  
Johnson**  
Subject Specialist  
Librarian for  
Social Sciences

(954)262-4577  
mj774@nova.edu



# SOME OF OUR TOOLS AND SERVICES

- Computer labs and computer areas
- Study Rooms that can be reserved
- Midterm and Finals special hours
- Laptops and cell phone chargers to check out
- Printers, Photocopiers, Scanner
- Interlibrary loan and document delivery
- Reference Assistance (Desk, Phone, Chat, Appointments)



# OUR HOMEPAGE

The screenshot shows the library's homepage with several key elements:

- Header:** NSU Florida logo on the left and "ALVIN SHERMAN LIBRARY, RESEARCH, AND INFORMATION TECHNOLOGY CENTER" on the right.
- Navigation Bar:** Includes a "Menu" icon, links for "Give!", "Get a Library Card", "Today" (with a clock icon), "7:30 am – 11:00 pm", "Libraries" (with a dropdown arrow), "Search" (with a magnifying glass icon), and "Account" (with a user icon).
- Main Content Area:** A "Shark Search" box with an information icon. Below it are links for "Catalog Only", "Full Text Finder", "Google Scholar", "Citation Help", and "Feedback". To the right is a "Ask a Librarian" button with a speech bubble icon. Below that are sections for "Databases by Name", "Databases by Subject", and "Public Library Services".
- Annotations:** A large green arrow points down to the search box. Two other green arrows point from the search box area towards the "Ask a Librarian" and "Databases by Name" sections.
- URL:** A pink rounded rectangle at the bottom contains the URL <http://sherman.library.nova.edu/>.



# APA HELP



APA Citation Style

Academic Writer (previously APA Style  
CENTRAL) | APA Books

**Academic Writer™**  
APA's tool for teaching and learning effective writing

Welcome ▾ My File Cabinet ▾ My Alerts ▾

HOME LEARN REFERENCE WRITE

## Welcome to Academic Writer

Academic Writer is APA's authoritative solution offering you a complete digital environment for teaching, learning, and writing academic papers.

**LEARN:** Use the Learning Center to find video quick guides and tutorials to help you get started and refine your research and writing.

**REFERENCE:** Use the Reference Center to find tools to assist you with building and managing a reference library.

**WRITE:** Use the Writing Center to select an APA Style paper template, collaborate with peers and reviewers, and check your work.

**LEARN**

Learn to write with grace and precision. Consult [quick guides](#), [tutorials](#), [self-quizzes](#), [sample papers](#), [sample references](#), [sample tables](#), and [sample figures](#) to master the art of scholarly writing.

**REFERENCE**

Manage your reference library and add new references. Create your own APA Style references with forms in the reference generator. Add existing references by importing files or searching more than 4 million preformatted references.

**WRITE**

Select one of our paper templates to begin writing. Use integrated research tools to plan your work. Enjoy the ease of comprehensive paper formatting and checking for common APA Style errors.

# RESEARCH APPOINTMENTS



Ask a Librarian 

Call (954) 262-4613 (Toll-Free)

Email [refdesk@nova.edu](mailto:refdesk@nova.edu) or [use our form](#).

Chat with a Librarian

**Appointment request [form](#) | [En Español](#)**

## Library Appointment Request

Please complete this form to request a one-on-one appointment with a librarian. On the form, provide your contact information, your research topic/assignment, and your availability. Once you submit this form, a librarian will email you to confirm an appointment time.

### Contact Information

Name \*

First

Last

Email \*

Phone \*

Affiliation with Nova Southeastern University \*

College \*

How would you like to receive instruction? \*

- In person at the Alvin Sherman Library
- By phone (while simultaneously online at a computer)
- Online only (using GoToTraining)

### Instruction Request

What information are you looking for? Please select one instruction category. \*

- General library orientation on how to find books, journal articles, dissertations, etc.
- How to find landmark studies or primary sources
- How to find tests and measurements
- Using citation resources (APA Style, MLA, etc.)
- Introduction to EndNote Software / EndNote Web
- Using Genealogy Resources
- Using Grants and Scholarship Resources
- Recursos En Español

What is your research topic? What are your assignment requirements (i.e. deadlines, types of sources needed, etc.)? \*

Course / Professor

# PSYCHOLOGY DATABASES

## Psychology & Behavioral Sciences databases for NSU patrons

44 results. (See in alphabetical order)

### Top Picks

**1. PsycINFO** - ProQuest

Citations and abstracts to literature in psychology, the behavioral sciences, and other related disciplines. Includes psychological research and its applications. Contains material of relevance to psychologists and professionals in related fields such as psychiatry, management, business, education, social science, neuroscience, law, medicine, and social work.



**2. Oxford Clinical Psychology** - Oxford University Press

Oxford Clinical Psychology provides full-text access to over 300 titles in Oxford's global clinical psychology. Covering a broad range of specialty areas, disorders, and treatment modalities, Oxford Clinical Psychology enables users to search and browse high-quality research and practice information contributed by a superlative group of experienced authors and editors. Content is extensively vetted, and regularly updated. This comprehensive library of both new and classic titles includes professional reference books, seminal scholarly and research works, and therapist guides and workbooks in the renowned [Treatments That Work](#) series.



**3. PsycARTICLES** - ProQuest

Full-text articles from 77 peer-reviewed journals in general and specialized psychology from APA and other publishers. Most available from Vol. 1, Issue 1, starting in 1894.



**4. Psychology Database** - ProQuest

Full-text articles from over 400 psychology journals and related publications.



# Questions?



*We're here to help!*



# HENDERSON COUNSELING SERVICES

Dr. Erika Aguilar  
Correa

NOVA SOUTHEASTERN  
UNIVERSITY

**NSU**  
Florida







**A place to explore your thoughts and feelings in order to build skills to handle life's trials and accomplish your goals.**

**Let us help you MAXIMIZE your BEST SELF...**

# PROCRASTINATION



# TEST ANXIETY



# RELATIONSHIP ISSUES

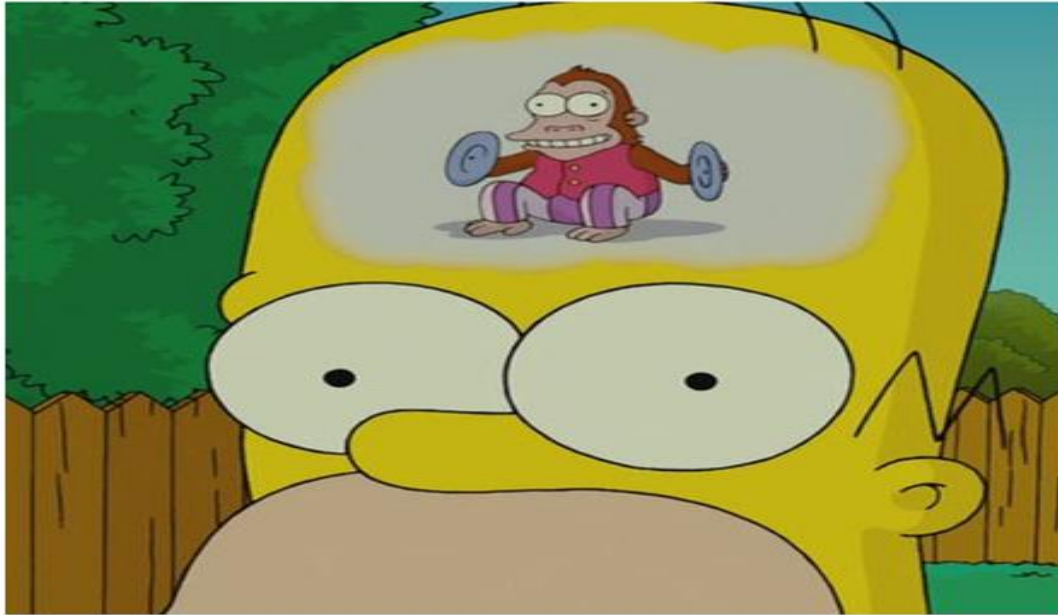


# CONCENTRATION ISSUES

MY FOCUS WHEN I'M PLAYING VIDEOGAMES



MY FOCUS WHEN I'M STUDYING



# STRESS MANAGEMENT





- ▶ Screening Session
- ▶ +10 Free Counseling Sessions
- ▶ Individual / Couples/Family Counseling
- ▶ Psychiatric Services Available
- ▶ 24/7, 7 days a week Crisis Hotline
- ▶ Confidential

- Screening Sessions Daily
  - Call for instructions (954) 424-6911
- OR**
- Log into portal to set up 1st appt.  
[www.hendersonbh.org/services/student-counseling/nova-southeastern-university/](http://www.hendersonbh.org/services/student-counseling/nova-southeastern-university/)



# HENDERSON STUDENT COUNSELING CENTER

## Phone Numbers

Office:

954-424-6911 or 954-262-7050

Hotline:

954-424-6911 or 954-262-7050

(available 24 hours, 7 days a  
week)

[www.hendersonbh.org/services/student-counseling/nova-southeastern-university/](http://www.hendersonbh.org/services/student-counseling/nova-southeastern-university/)



OFFICE OF  
STUDENT  
DISABILITY  
SERVICES

Jennifer Wilson

NOVA SOUTHEASTERN  
UNIVERSITY

**NSU**  
Florida



**Office of Student Disability Services**

# Rosenthal Student Center

Phone Number: (954) 262-7185

Fax Number: (954)262-1390

Email: [disabilityservices@nova.edu](mailto:disabilityservices@nova.edu)

Website: [www.nova.edu/disabilityservices](http://www.nova.edu/disabilityservices)

Social Media: [www.facebook.com/nsudisability](http://www.facebook.com/nsudisability)

# STUDENT DISABILITY SERVICES PROCESS

## ➤ Process

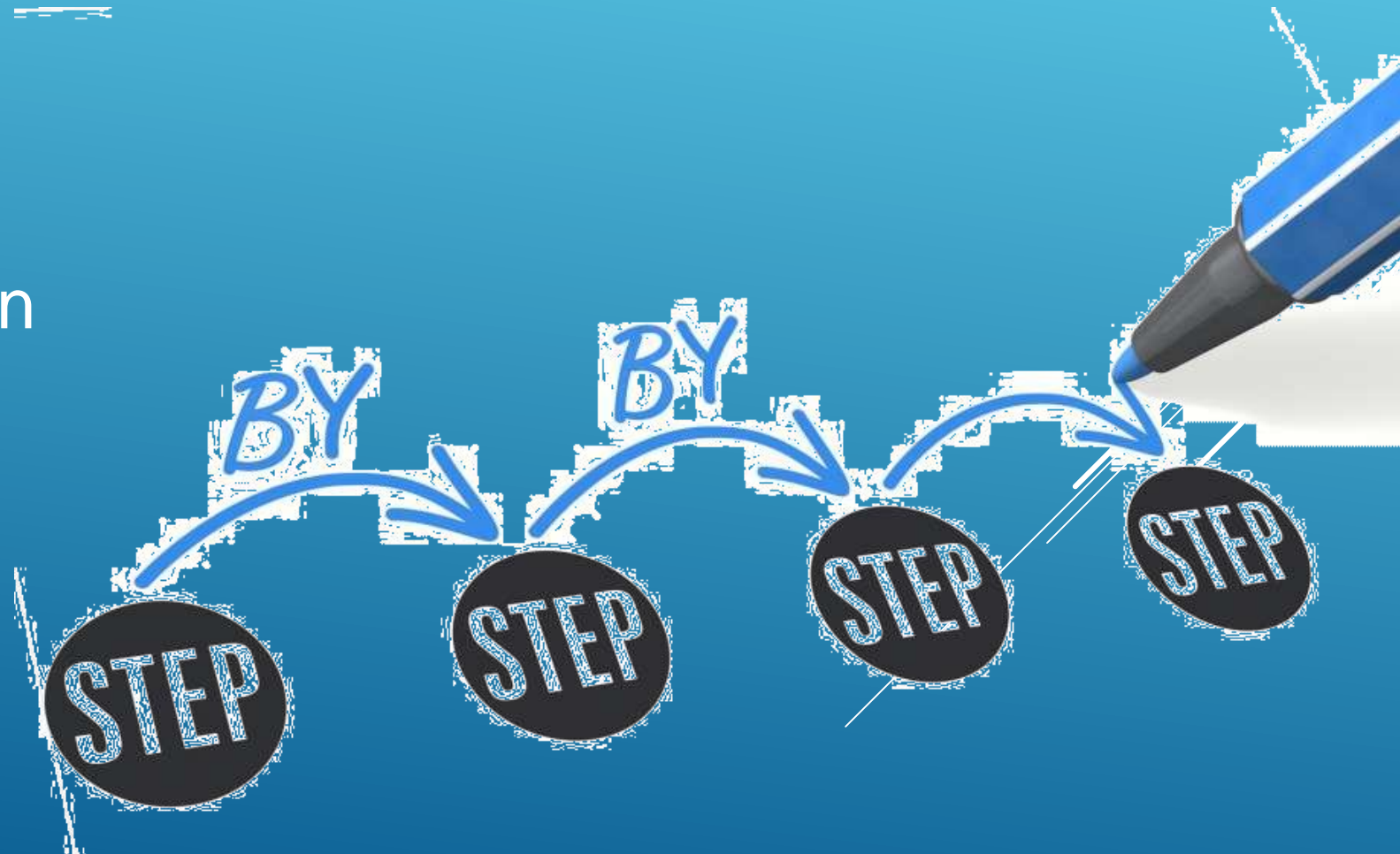
- ✓ Can take up to 4 weeks

## ➤ Website

- ✓ Forms
- ✓ Guidelines
- ✓ Contact information

## ➤ Documentation

- ✓ Within 3 years
- ✓ 504 or IEP plans
- ✓ Where to turn in



# Verification of Absences

Nova Southeastern University is committed to supporting academic success for all students. Certain life events may inhibit this process during a student's academic career. The Office of Student Disability Services can review documentation to verify absences due to temporary injuries or family emergencies.

The most common examples of temporary injuries are broken bones, sprains, hospitalization, or recovery from a medical procedure/surgery. The most common examples of family emergencies are birth of a child, death of an immediate family member, or hospitalization of an immediate family member.

- First and Last Name
- Student N Number
- NSU email address
- Phone Number
- The date(s) of absence(s)
- The projected recovery timeline, if applicable
- The name(s) of the professor(s) to notify
- Copies of documentation to support absence(s)

**NSU**  
Florida

NOVA SOUTHEASTERN  
UNIVERSITY

# Rosenthal Student Center

Phone Number: (954) 262-7185

Fax Number: (954)262-1390

Email: [disabilityservices@nova.edu](mailto:disabilityservices@nova.edu)

Website: [www.nova.edu/disabilityservices](http://www.nova.edu/disabilityservices)

Social Media: [www.facebook.com/nsudisability](http://www.facebook.com/nsudisability)



NSU WRITING AND  
COMMUNICATIONS  
CENTER

Kevin Dvorak,  
Ph.D. – Executive  
Director/Professor

954-262-8108

[kdvorak@nova.edu](mailto:kdvorak@nova.edu)

OFFICE OF  
STUDENT  
FINANCIAL  
ASSISTANCE

Samuel Reasee

Tanisha Dodd

954-262-3380

# TITLE IX

Laura Bennett

Desmond Daniels

# Preventing Sexual Misconduct at NSU

Graduate Student Orientation  
College of Psychology  
August 2019

# NSU's Title IX/Sexual Misconduct Policy

- Behaviors prohibited by the Title IX/Sexual Misconduct Policy:
  - **Sex-based harassment**
  - **Sexual violence**
  - **Intimate relationship violence**
  - **Stalking**
  - **Sexual exploitation**
  - **Retaliation**

*You can find more information about this policy and university definitions for each of these prohibited behaviors at: [nova.edu/title-ix](http://nova.edu/title-ix).*

# Report Concerning Behavior

- **Report your concern to the NSU Title IX Coordinator**
  - Preferred: Via secure online reporting form at [nova.edu/title-ix](https://nova.edu/title-ix).
  - By phone: 954-262-7858
  - Via e-mail: [laura.bennett@nova.edu](mailto:laura.bennett@nova.edu)

**Note:** NSU employees, including faculty and staff, are required to report disclosures of sexual misconduct to the Title IX Coordinator.

- **Provide as much detail as possible**

\*\*\* Crimes and/or immediate threats should be reported **immediately** to **9-1-1.** \*\*\*



# Review Policy: Online Training (Think About It!)

## This training is designed to give all new NSU students key information about sexual misconduct prevention

1. Access the training through the personalized link included in the email sent to your NSU email account from “Laura Bennett, NSU Title IX Coordinator.”
2. Or, visit [www.campusclarity.com/signup](http://www.campusclarity.com/signup).
  - Enter your **NSU email address** into the first empty field, then click “Continue.”
  - Your Password is your **NSU ID number** (starting with the letter “N”).
  - Under “Available Courses,” launch the course titled, *Think About It: Adult Learners*.
3. Complete the training within your first 30 days at NSU – takes about an hour and you can stop and come back to it.

If you have questions about the training, contact Desmond Daniels at [dddaniels@nova.edu](mailto:dddaniels@nova.edu).



# CONTACT Us

**Laura Bennett,  
Title IX Coordinator  
(954) 262-7858  
[laura.bennett@nova.edu](mailto:laura.bennett@nova.edu)**



**Desmond D. Daniels,  
Title IX Investigator  
(954) 262-7863  
[dddaniels@nova.edu](mailto:dddaniels@nova.edu)**



**Website: [www.nova.edu/title-ix](http://www.nova.edu/title-ix)  
Email: [titleix@nova.edu](mailto:titleix@nova.edu)**



# STUDENT GOVERNMENT ASSOCIATION

Barry Nierenberg, Ph.D.  
SGA Faculty Advisor

College of Psychology  
NOVA SOUTHEASTERN UNIVERSITY

**NSU**  
Florida

KIRK BERNER  
DIRECTOR OF STUDENT  
SERVICES  
COLLEGE OF PSYCHOLOGY  
KIRK@NOVA.EDU  
954-262-5727

College of Psychology  
NOVA SOUTHEASTERN UNIVERSITY

**NSU**  
Florida

# ACADEMIC BREAK-OUT ROOMS

(ACADEMIC BREAK-OUT SESSIONS IMMEDIATELY FOLLOW LUNCH)

CLINICAL PSYCHOLOGY (Ph.D. and Psy.D.) – MAXWELL MALTZ BUILDING 2055

SCHOOL PSYCHOLOGY (Psy.D.) AND SPECIALIST IN SCHOOL PSYCHOLOGY (Psy.S.) – MAXWELL MALTZ BUILDING 2044 AND 2045

ALL MASTERS IN COUNSELING PROGRAMS – DESANTIS BUILDING ROOM 1048/1049

EXPERIMENTAL PSYCHOLOGY – DESANTIS BUILDING ROOM 1054

THANK YOU!

LUNCH WILL BE SERVED  
ACROSS THE COURTYARD IN  
THE DE SANTIS BUILDING  
ATRIUM.

College of Psychology  
NOVA SOUTHEASTERN UNIVERSITY

**NSU**  
Florida

COLLEGE OF PSYCHOLOGY ORIENTATION PAGE

[HTTPS://PSYCHOLOGY.NOVA.EDU/GRADUATE/ORIENTATION.HTML](https://psychology.nova.edu/graduate/orientation.html)

COLLEGE OF PSYCHOLOGY STUDENT RESOURCE PAGE

[HTTPS://PSYCHOLOGY.NOVA.EDU/STUDENTS/CURRENT-STUDENTS.HTML](https://psychology.nova.edu/students/current-students.html)